



**£400,000**  
**Cheshire Street**  
London, E2 6EH



Set just a few moments from Brick Lane is this 1 bedroom apartment located on the 2nd floor of a modern private development.

The property has a bright open plan reception room with a modern fitted kitchen with integrated appliances, large family bathroom and a good size double bedroom.

The development is kept in good order throughout and features a video entryphone system, lift facilities, access to both a communal roof terrace with amazing City views as well as an allocated parking space set within a secure underground car park.

Cheshire Street is located moments from Brick Lane, one of the East End's most famed streets with a colourful history that records numerous different communities passing through over the centuries. The restaurants, cafes and shops both on the road and in the wider locality are popular destinations for locals and visitors alike, and considered heaven for bargain hunters, foodies and fashionistas. Columbia Road Flower Market, Spitalfields and Whitechapel are all close by as well as some fantastic green escapes further afield - Haggerston Park, London Fields, and Victoria Park - voted London's favourite outdoor space.

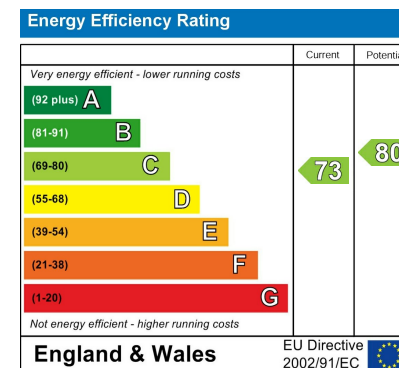
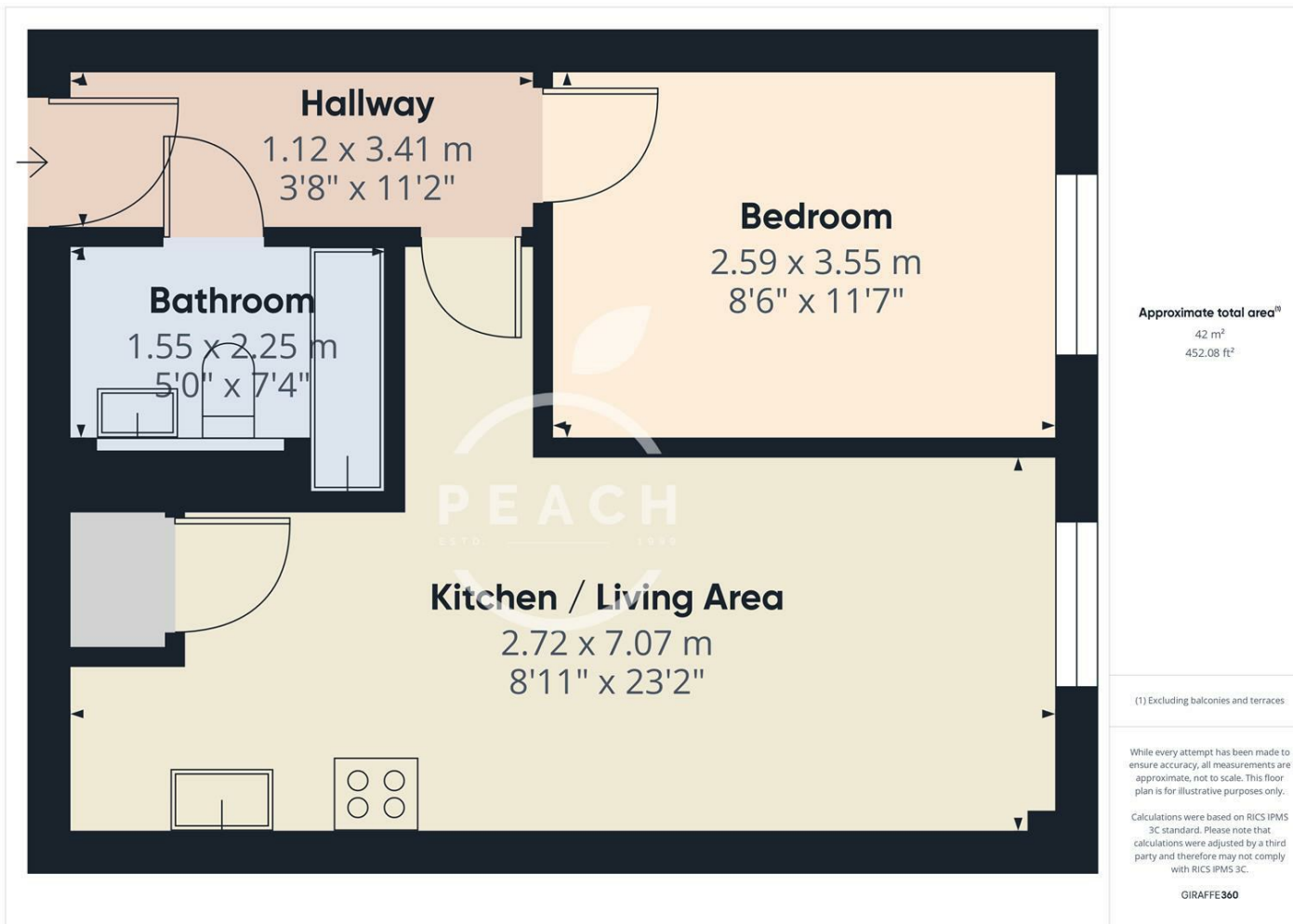
The area has excellent transport links and is a short walk from Liverpool Street mainline station, Aldgate Underground and Shoreditch High Street Overground stations, as well as being served by a large number of bus routes.

Offered on a chain free basis.

Leasehold: approx. 900 years  
Service Charge: £2406 per annum  
Ground Rent: £300 per annum  
Council Tax: Band C







Agents Note: Whilst every care has been taken to prepare these particulars, they are for guidance purposes only. All measurements are approximate and are for general guidance purposes only and whilst every care has been taken to ensure their accuracy, they should not be relied upon and potential buyers/tenants are advised to recheck the measurements

**OFFICE ADDRESS**  
88 Cheshire Street  
London  
E2 6EH

**OFFICE DETAILS**  
0207 739 6969  
info@peachproperties.com  
www.peachproperties.com